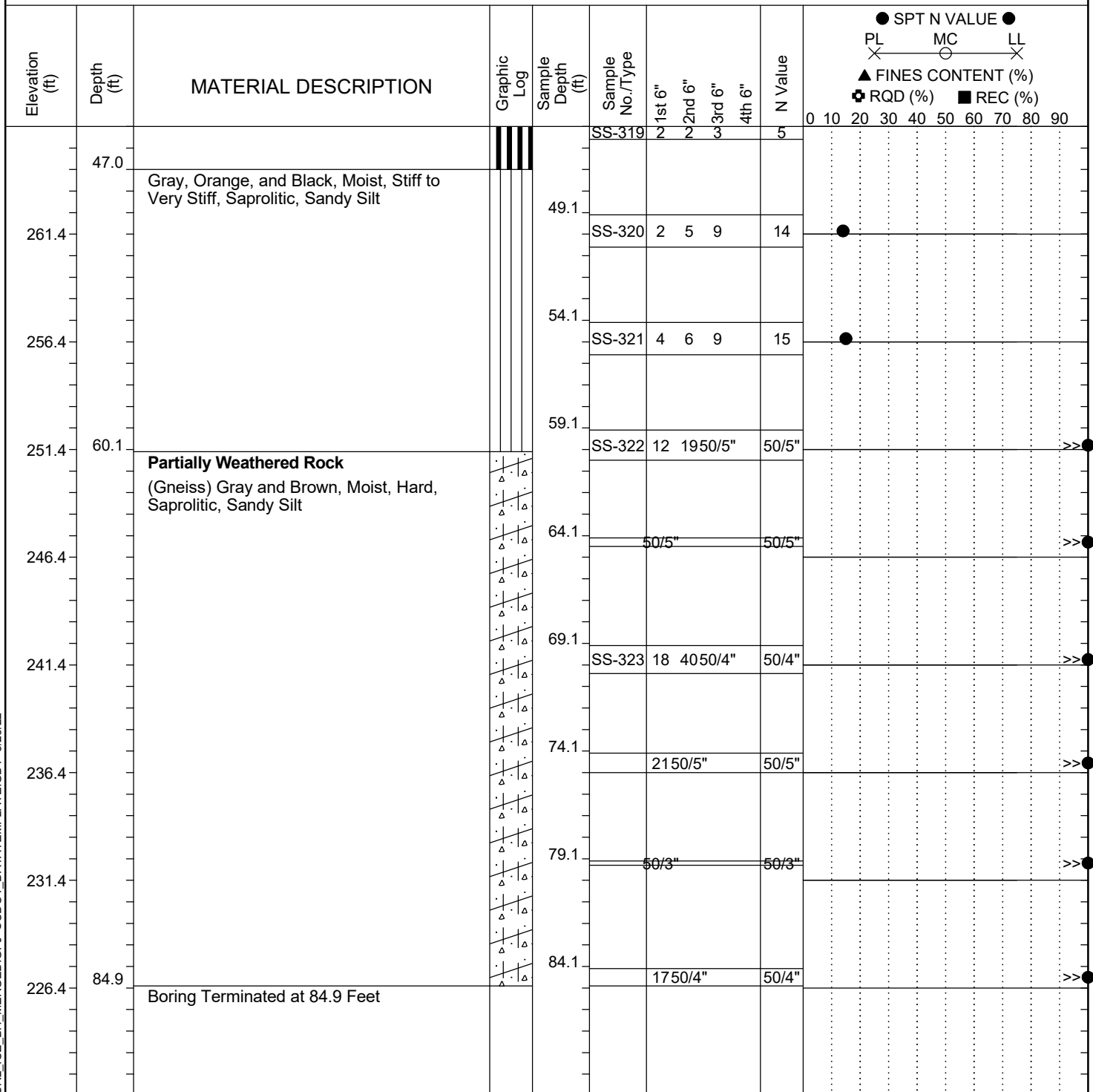


Project ID: P039719				County: Richland		Boring No.: G-113		
Site Description:		Carolina Crossroads Phase 2					Route: Ramp	
Eng./Geo.: M. Stanbury		Boring Location: 397+32			Offset: 31 RT		Alignment: RAMPF	
Elev.: 311.4 ft		Latitude: 34.03934678		Longitude: -81.09556744		Date Started: 3/9/2022		
Total Depth: 84.9 ft		Soil Depth: 84.9 ft		Core Depth: N/A ft		Date Completed: 3/9/2022		
Bore Hole Diameter (in): 2.25		Sampler Configuration			Liner Required: Y (N)		Liner Used: Y (N)	
Drill Machine: D-50 #439		Drill Method: RW		Hammer Type: Automatic		Energy Ratio: 90.8%		
Core Size: N/A		Driller: R. Cassell		Groundwater: TOB N/A		24HR Dry		


LEGEND

SAMPLER TYPE		DRILLING METHOD	
SS - Split Spoon	NQ - Rock Core, 1-7/8"	HSA - Hollow Stem Auger	RW - Rotary Wash
UD - Undisturbed Sample	CU - Cuttings	CFA - Continuous Flight Augers	RC - Rock Core
AWG - Rock Core, 1-1/8"	CT - Continuous Tube	DC - Driving Casing	